

ATTAINMENT'S



# Match Time

• STUDENT WORKBOOK •

9:00

LEAH BASTIAN





**By Leah Bastian**  
Edited by Abby Davies  
Graphic Design by Erin Radermacher

ISBN: 978-1-64856-022-4

An Attainment Company Publication  
© 2021 by Attainment Company, Inc. All rights reserved.  
Printed in the United States of America



P.O. Box 930160  
Verona, Wisconsin 53593-0160 USA  
1-800-327-4269  
[www.AttainmentCompany.com](http://www.AttainmentCompany.com)

Trademarks: All brand names and product names used in this publication are trade names, service marks, trademarks, or registered trademarks of their respective owners.

5:10  
4:15



30

## Table of Contents

### GETTING STARTED

Introduction .....	5
--------------------	---

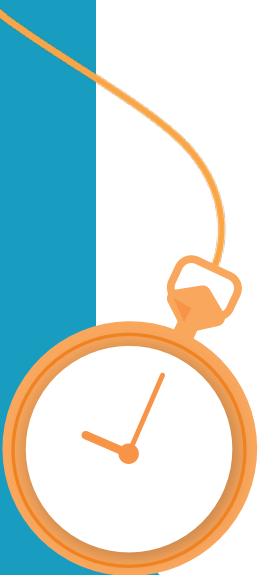
### WORKSHEETS

#### Hours

Match time in hours using digital clocks .....	6
Match time in hours using analog clocks .....	8
Match time in hours using analog and digital clocks .....	10
Tell time in hours using an analog clock and write the time using a digital clock. ....	16
Tell time in hours using a digital clock and write the time using an analog clock .....	20
Write the time in hours using an analog clock .....	24
Tell time in hours using an analog clock and write the time .....	28
Tell time in hours using a digital clock and write the time .....	30

#### Quarter Hours

Match time in quarter hours using digital clocks .....	32
Match time in quarter hours using analog clocks .....	34
Match time in quarter hours using analog and digital clocks .....	36
Tell time in quarter hours using an analog clock and write the time using a digital clock .....	44
Tell time in quarter hours using a digital clock and write the time using an analog clock .....	48
Write the time in quarter hours using an analog clock .....	52
Tell time in quarter hours using an analog clock and write the time .....	56
Tell time in quarter hours using a digital clock and write the time .....	58





9:00 3:00

### Minutes

Match time in minutes using digital clocks .....	60
Match time in minutes using analog clocks.....	62
Match time in minutes using analog and digital clocks .....	64
Tell time in minutes using an analog clock and write the time using a digital clock .....	72
Tell time in minutes using a digital clock and write the time using an analog clock .....	76
Write the time in minutes using an analog clock.....	80
Tell time in minutes using an analog clock and write the time .....	84
Tell time in minutes using a digital clock and write the time .....	86

### Earlier/Later

Tell time earlier or later in hours using a digital clock .....	88
Tell time earlier or later in hours using an analog clock .....	96
Tell time earlier or later in hours using an analog and digital clock.....	100
Tell time earlier or later in hours using a digital and analog clock .....	104
Tell time earlier or later in quarter hours using an analog clock .....	108
Tell time earlier or later in quarter hours using a digital and analog clock .....	112
Write the earlier or later time in quarter hours using an analog clock .....	116
Write the earlier or later time in minutes using a digital clock .....	120

## SUPPLEMENTAL RESOURCES

Accommodations and Hands-On Learning .....	128
--	-----







## Introduction

---

Welcome to the **MatchTime Student Workbook!** You may already be familiar with Attainment's MatchTime Software. Now, students can have their own set of worksheets to complete. Geared toward 2nd and 3rd grade standards, this workbook provides structure for complementary practice. We recommend completing a set of worksheet activities followed by a software activity for the generalization of skills.

Familiar visual graphics and concepts scaffold students' learning and expand their awareness of time skills. Some worksheets mirror the software exactly, while others invite additional and varied practice. The workbook is organized into the four sections of the MatchTime Software; however, many of these skills support each other and overlap. For instance, hours and quarter hours are incorporated into practice telling earlier and later times to revisit skills. When a new activity is presented, an example problem at the top of the first page in the set is completed and labeled with a star.

At the end of the workbook, **Accommodations and Hands-On Learning** provides advice for instruction and alternative response modes. Just remember that different students might learn best with software, paper worksheets, or interacting with manipulatives, so follow their lead with where to start. All worksheets may be easily supported with real, play, or paper clocks.

**Learning Objective:**  
Match time in hours using digital clocks.

# Hours

**Directions:** Match the clocks with the same time.



4:00

12:00

1.

9:00

5:00

2.

6:00

4:00

3.

12:00

6:00

4.

5:00

9:00

# Hours

**Directions:** Match the clocks with the same time.



1.

11:00

2:00

2.

7:00

1:00

3.

2:00

7:00

4.

3:00

3:00

5.

1:00

11:00



**Learning Objective:**  
Match time in hours using analog clocks.

# Hours

**Directions:** Match the clocks with the same time.

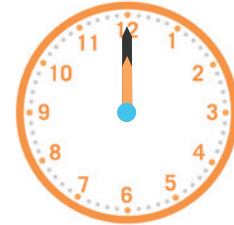
1.



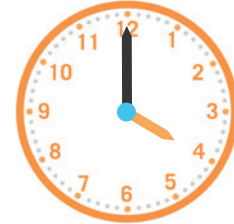
2.



3.



4.



5.



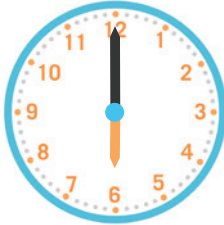


# Hours

**Directions:** Match the clocks with the same time.



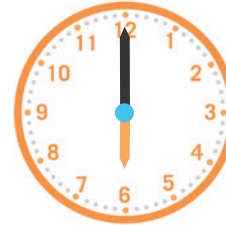
1.



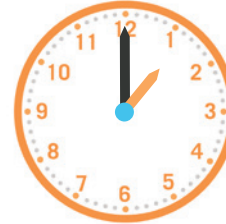
2.



3.



4.



5.

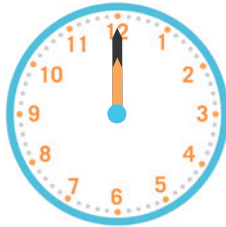


**Learning Objective:**  
Match time in hours using analog and digital clocks.

# Hours

**Directions:** Match the clocks with the same time.

1.



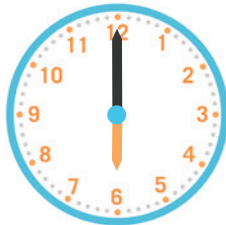
3:00

2.



6:00

3.



1:00

4.



12:00

5.



10:00

# Hours

**Directions:** Match the clocks with the same time.



1.



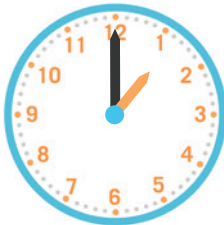
9:00

2.



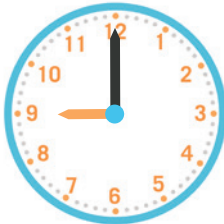
11:00

3.



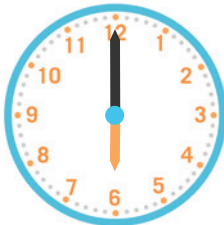
4:00

4.



6:00

5.



1:00



**Learning Objective:**  
Match time in hours using analog and digital clocks.

# Hours

**Directions:** Match the clocks with the same time.

1.



8:00

2.



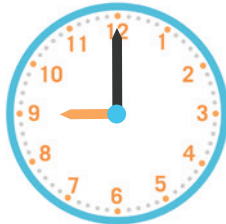
2:00

3.



7:00

4.



11:00

5.



9:00

# Hours

**Directions:** Match the clocks with the same time.



1.



7:00

2.



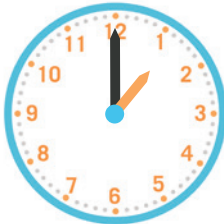
5:00

3.



4:00

4.



8:00

5.



1:00

**Learning Objective:**  
Match time in hours using analog and digital clocks.

# Hours

**Directions:** Match the clocks with the same time.

1.



2.



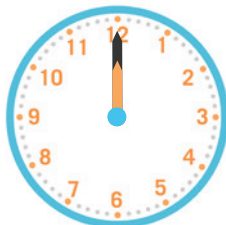
3.



4.



5.



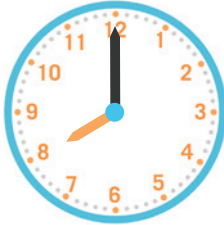


# Hours

**Directions:** Match the clocks with the same time.



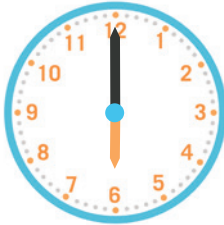
1.



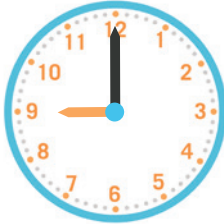
2.



3.



4.



5.

