

ATTAINMENT'S

ACCESS

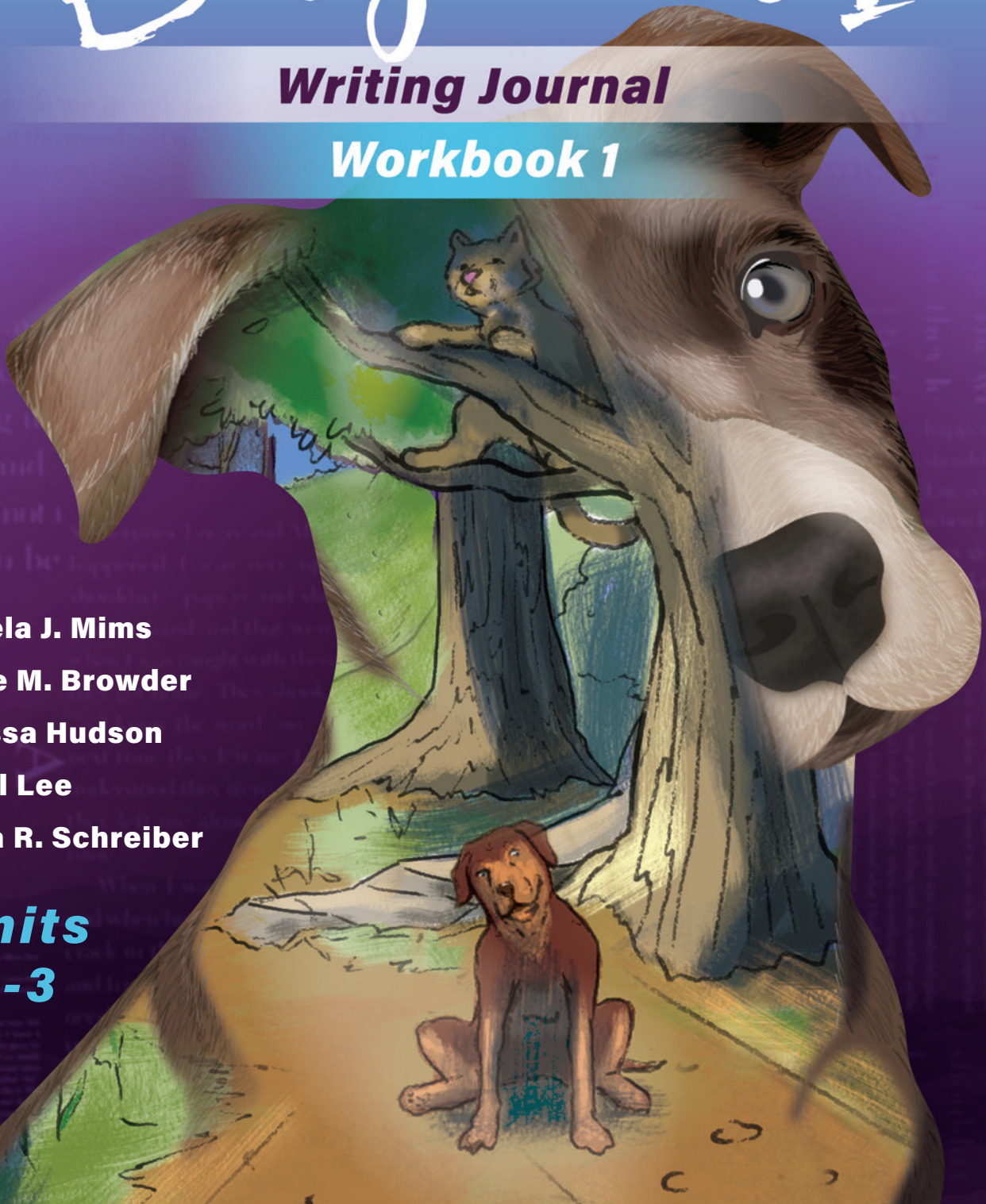
English I

Writing Journal

Workbook 1

Pamela J. Mims
Diane M. Browder
Melissa Hudson
Angel Lee
Linda R. Schreiber

Units
1-3



ACCESS

English I

Writing Journal Workbook 1

**Pamela J. Mims • Diane M. Browder • Melissa Hudson
Angel Lee • Linda R. Schreiber**

Edited by Linda Schreiber
Illustration Josh Eacret
Graphic Design by Erin Radermacher

An Attainment Company Publication
© 2023 by Attainment Company, Inc. All rights reserved.
Printed in the United States of America
ISBN: 978-1-64856-187-0



P.O. Box 930160 • Verona, Wisconsin 53593-0160 USA
1-800-327-4269 • www.AttainmentCompany.com

Trademarks: All brand names and product names used in this publication are trade names, service marks, trademarks, or registered trademarks of their respective owners.

Contents

Unit 1	1
Lesson 1.....	2
Lesson 2.....	7
Lesson 3.....	13
Lesson 4.....	20
Lesson 5.....	28
Lesson 6.....	33
Lesson 7.....	40
Lesson 8.....	45
Lesson 9.....	50
Lesson 10.....	55
Unit 2	57
Lesson 1.....	58
Lesson 2.....	61
Lesson 3.....	63
Lesson 4.....	65
Unit 3	67
Lesson 1.....	68
Lesson 2.....	69



UNIT 1

A Dog's Way Home

BY W. BRUCE CAMERON



Vocabulary Building

Complete the chart to show you know Bella's vocabulary from *A Dog's Way Home*.

Not allowed	Definition	
	Example	
	Non-example	

Application

1. List five things you think dogs should *not be allowed* to do:

1	
2	
3	
4	
5	









2. Where or when have you seen or heard the term *not allowed*? _____

3. List five things you are *not allowed* to do:

1	
2	
3	
4	
5	

Episode Map

Complete the Episode Map after you have read Chapter 2.

	<p>Character(s) Who is the event about?</p>	<p>Setting Where and/or when does the event take place?</p>	
<p> Event What caused the character to do something?</p>			
<p style="text-align: right;">Character's Feelings How did the character feel about what happened?</p> 			
<p> Plan What will the character do?</p>			
<p style="text-align: right;">Attempt How did the character try to solve the problem?</p> 			
<p> Consequence What happened as a result of the action or attempt?</p>			
<p style="text-align: right;">Resolution What was the outcome? How does the character feel about the consequence?</p> 			

Vocabulary Building

1. Complete the chart to show you know Bella's vocabulary from *A Dog's Way Home*.

No Barks	Definition	
	Example	
	Non-example	
Go Home	Definition	
	Example	
	Non-example	

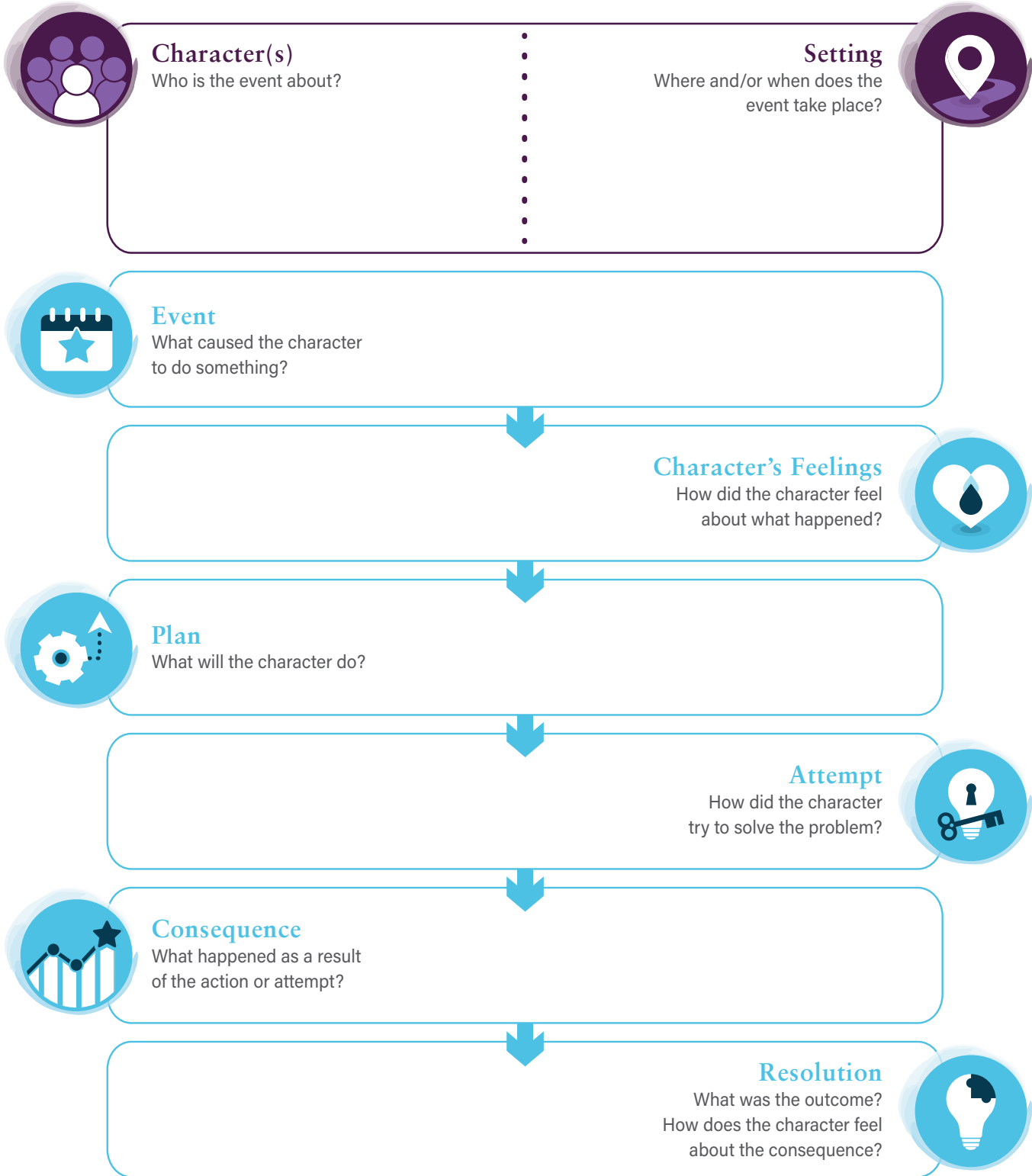
2. Fill in the blank.

veteran comfort sense worry

- My arm hurt a lot after my fall. I _____ it is broken.
- After my sister retired from the service, she attended every _____ meeting.
- The cat was a _____ to the older residents because she purred on their laps.
- The sky is clouding up. I _____ a storm is coming.
- Jody seems to know when the ice-cream truck is coming. We say she can _____ it.
- Do you _____ about what you will be when you are out of school?
- He has a large scar on his knee. He is a _____ of the war.
- I snuggle with that big, fluffy dog because she is a _____ to me.

Episode Map

Complete this Episode Map after you have read Chapter 6.



KWHL Chart



Research
Topic

.....

.....



Know

What do I know?

.....

.....



Want

What do I want to know more about?

.....

.....



How

How will I find out?

.....

.....



Learn

What did I learn?

.....

.....